

MAINTENANCE/TUNE UP Engine

Engine Mounts

Check tightness of all engine mounts including bolts that secure mounting plate to engine. Inspect rubber mounts for cracks. Tighten or replace if necessary. Always replace engine mounts when engine is removed for service.

Compression Test

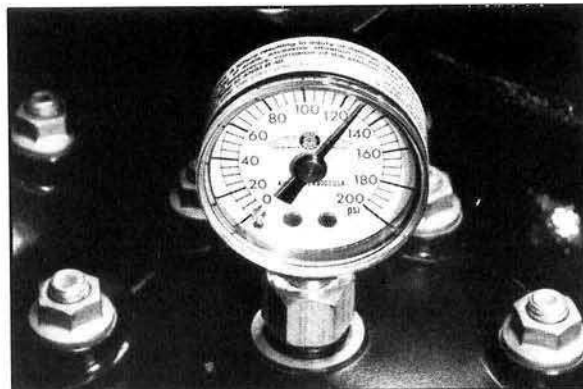
A compression test is a good indicator of engine condition. For accurate readings, use a high quality gauge and make sure the battery is in good condition and fully charged.

Compression Gauge PN 2870852

⚠ WARNING

The spark plug high tension leads must be securely grounded to the engine block to prevent a spark which may ignite fuel or fumes, causing a fire or explosion.

1. Remove all spark plug high tension leads and connect securely to ground on engine block.
2. Remove all spark plugs and install compression gauge in cylinder to be tested.
3. Using the starter motor, turn engine over with throttle wide open until a maximum reading is obtained (approximately 3-5 seconds). Record reading.
4. Repeat for the other cylinders and compare to each other cylinder. All readings must be within 5% of each other.



Compression (Open Throttle at Sea Level)

**Standard -120-150 lbs./sq. in
8.40-10.5 kg/sq. cm**

**Service Limit - Greater than 5%
variance between cylinders.**

Spark Plugs

1. Disconnect high tension leads and remove spark plugs. See page 7.1 for spark plug applications.
2. Inspect electrodes for wear, carbon buildup, or fouling (wet oily residue). Replace plugs if edges of electrodes are rounded or eroded.

CAUTION:

Severe engine damage may occur if the incorrect spark plug is used. Refer to Electrical section for spark plug type.

3. Clean with electrical contact cleaner or a glass bead spark plug cleaner only. A wire brush or coated abrasive should not be used.

Important! Use Only Resistor Spark Plugs

